

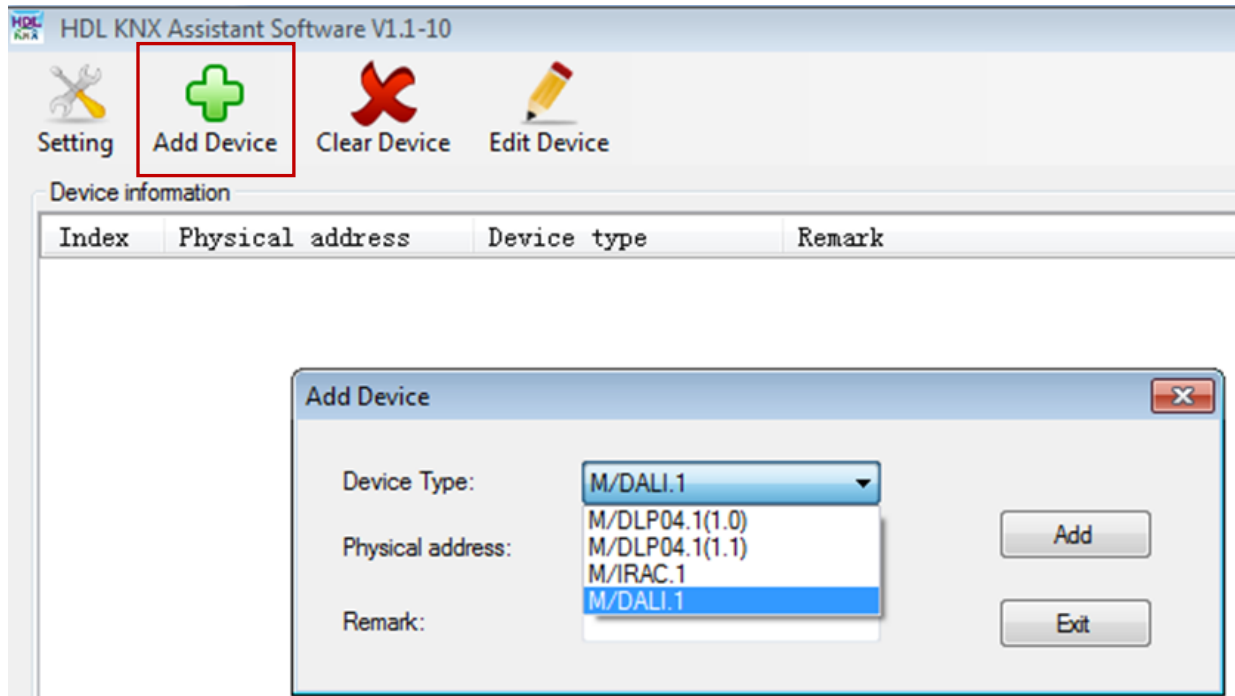
Assistant software for DALI group setting

1) Installing the software

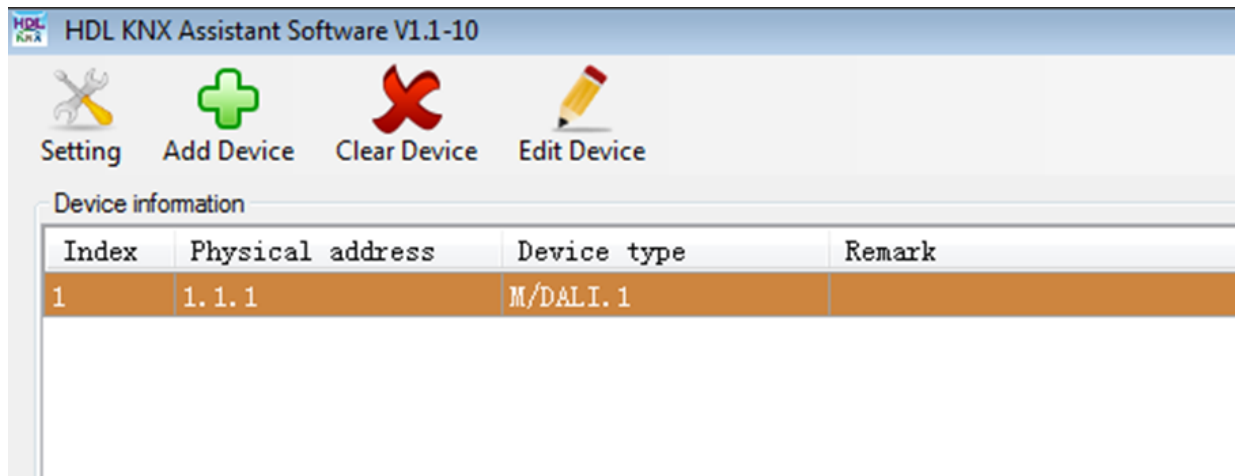
2) Add one device

Main form->Add device->M/DALI.1->set physical address and remark->Add

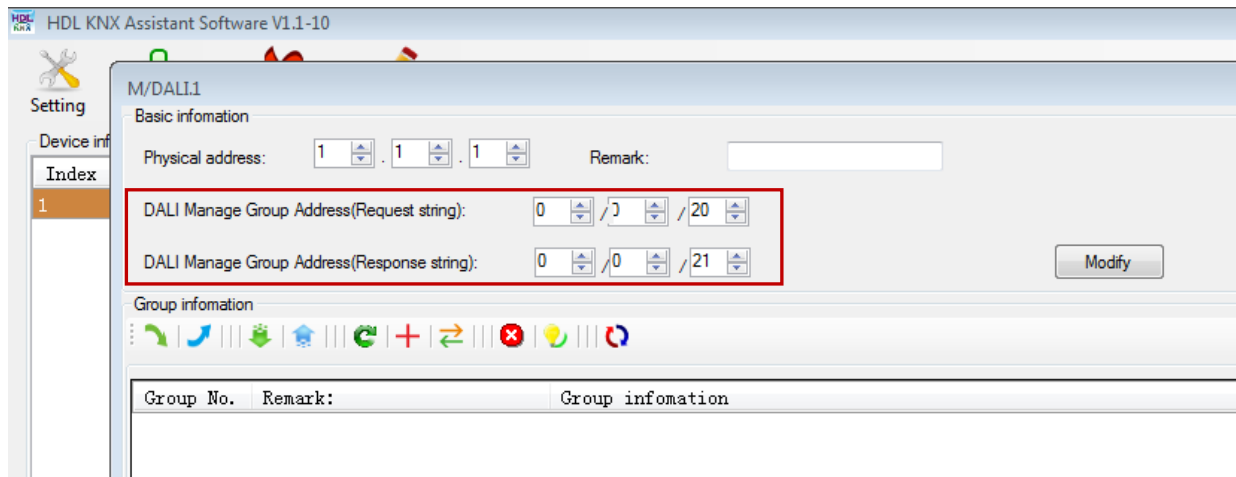
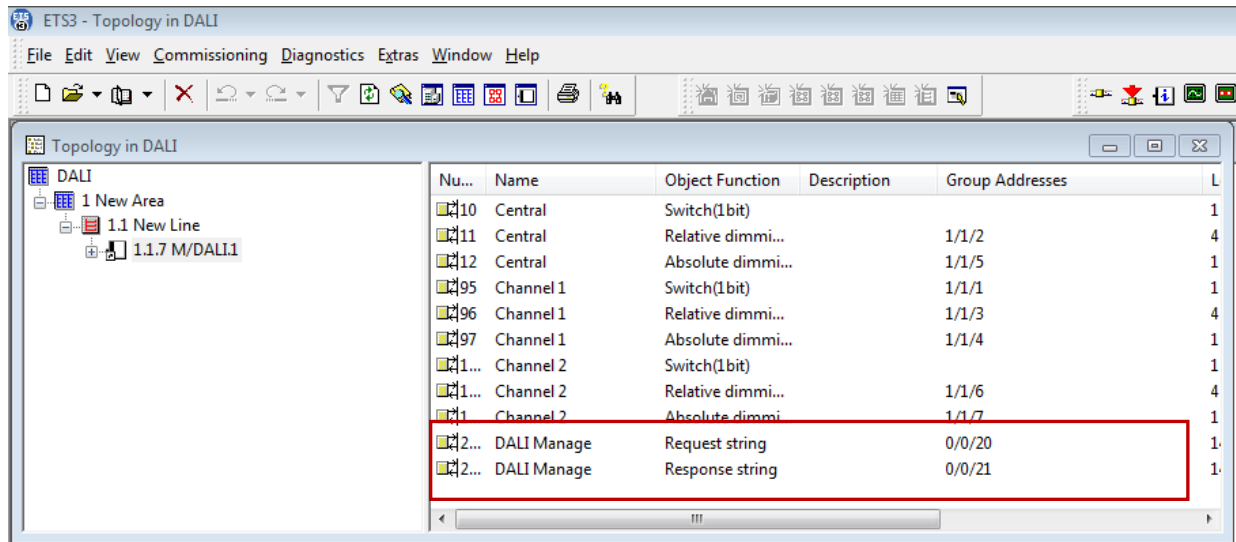
OK.



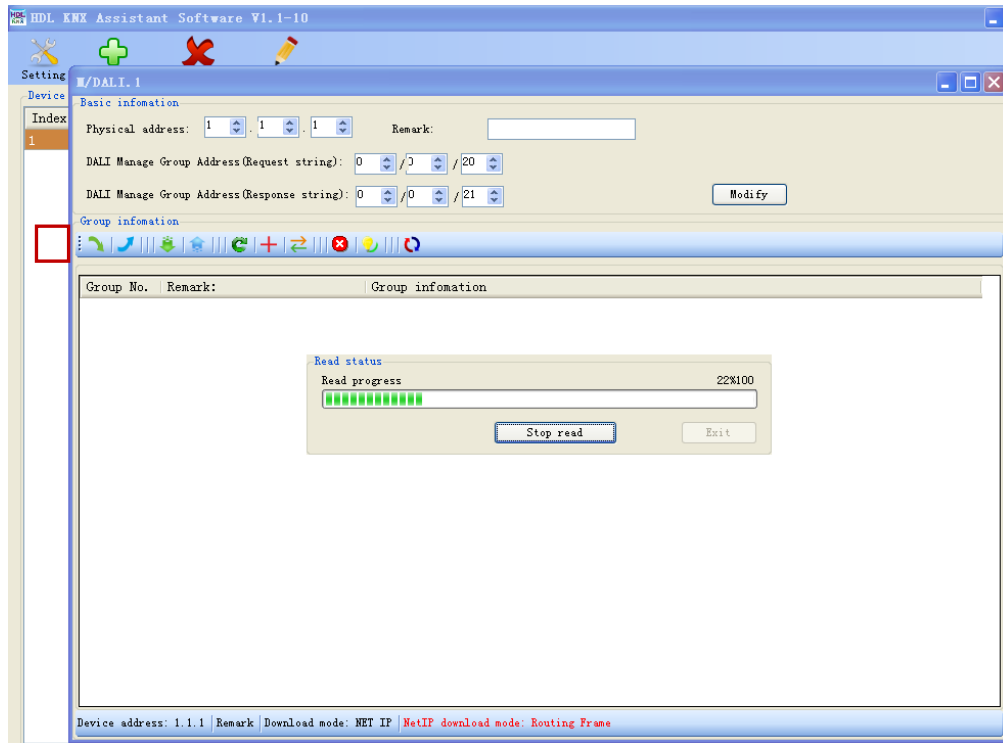
Add result:

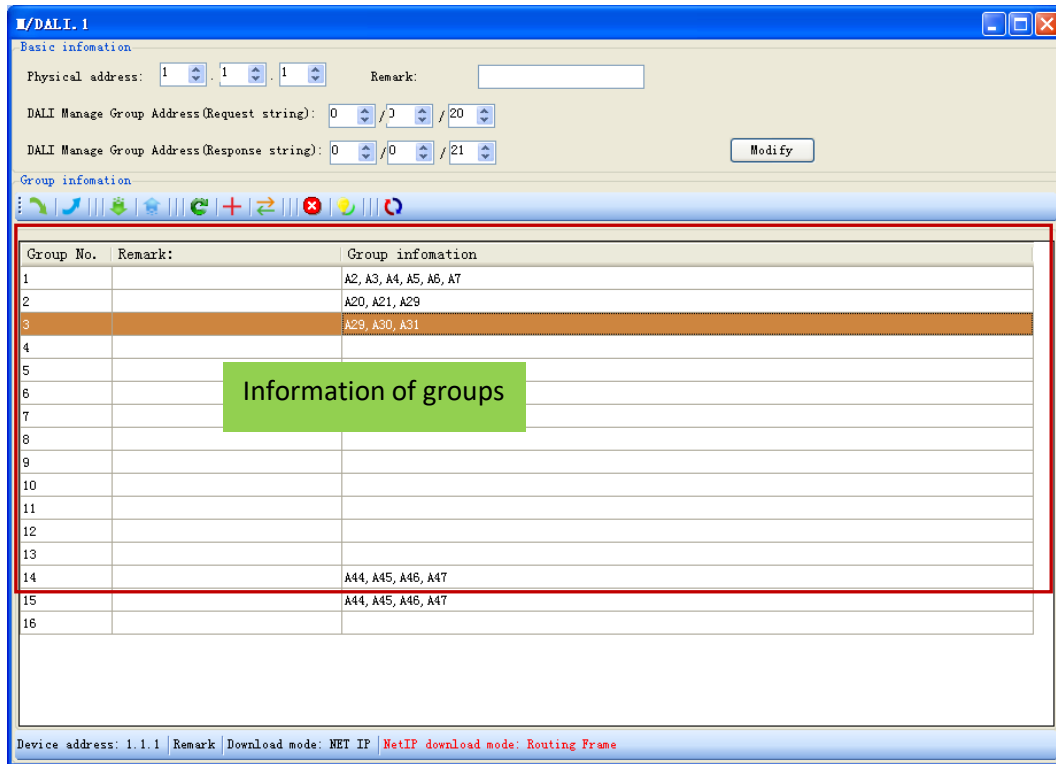


3) Input DALI Mange Group Address



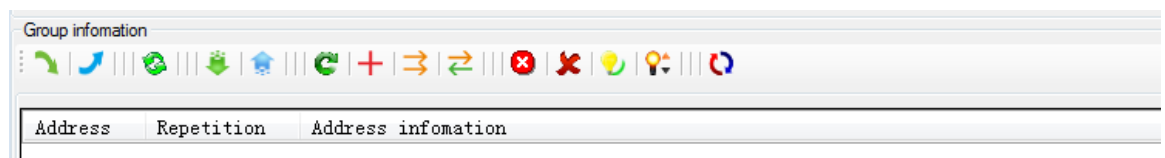
4) Read information of Group










DALI devices will be random assignment at first time reading. Double click gridview; it will enter into edit window, as below.

5) Function of DALI device main interface

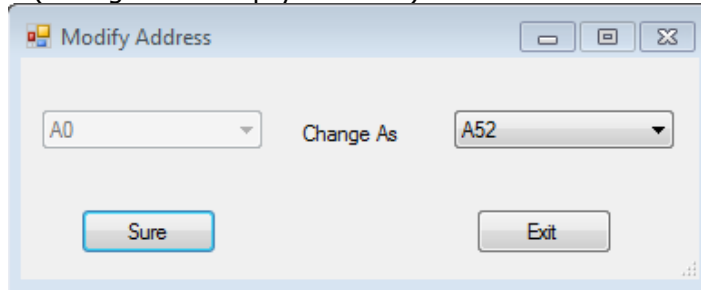



-  **Import backup file.**
-  **Backup information.**
-  **Refresh all parameters from ballast to DALI master.**
-  **Read information from DALI device.**
-  **Write information to DALI device.**

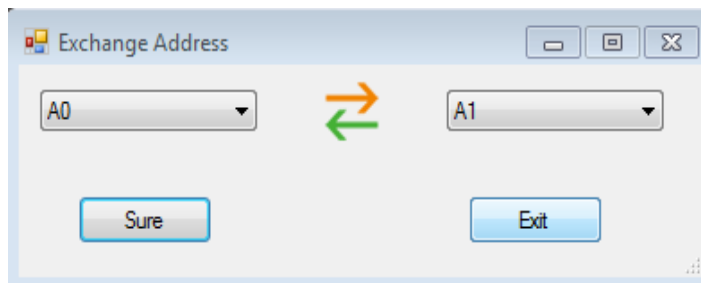
 **Redistribute Address**(all addresses and devices will be re-created).


 **Extension create address**(unaddressed devices).


 **Modify address** (change to a empty address).




 **Exchange address**(two device exchange address and device information).

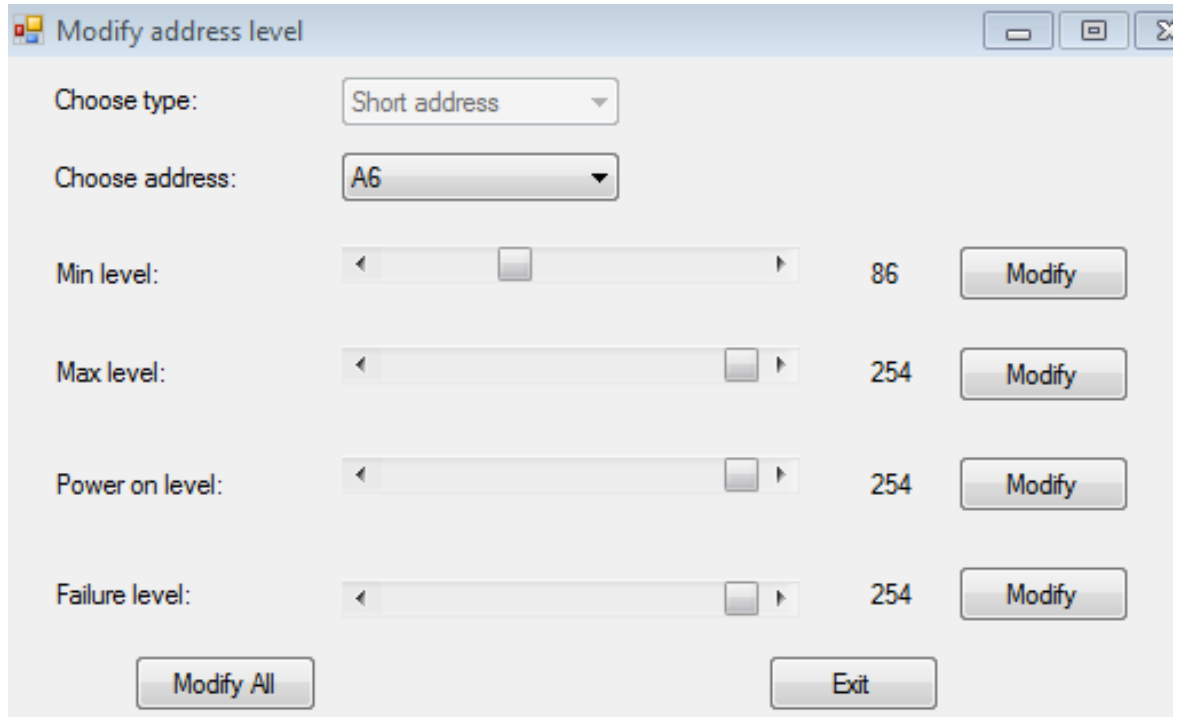



 **clear all address**(all address and device information will be clear).

 **clear current select address**(selected address and device information will be clear).

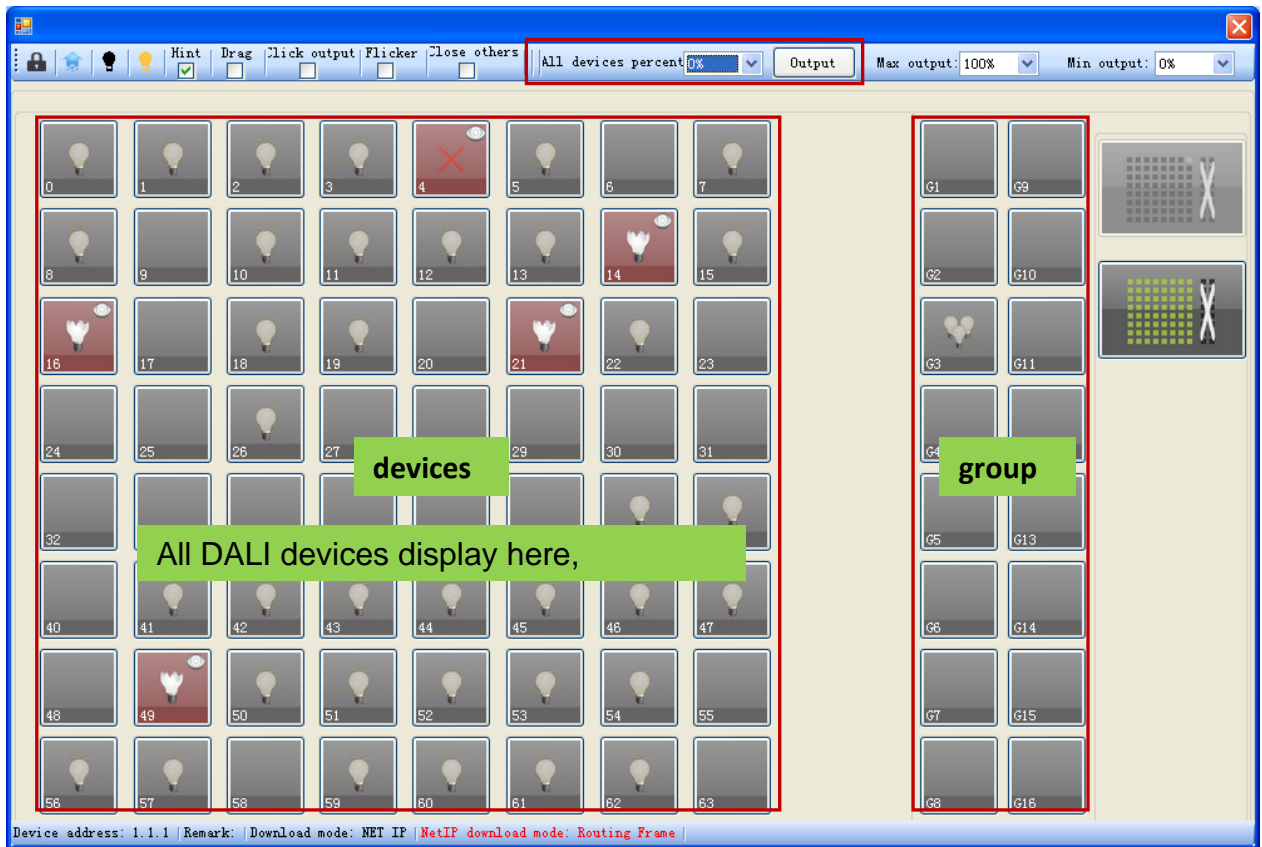
 **Detect and recovery missing device after power on**(Note:Only can recovery one device every times).

 **Modify current selected address level**(min level,max level,power on level,failure level).



 **Switch Info View**(group/address view)

- **Mange Group**



it means that the light is bad.



it means that the light is normal.



it means that the barretter is normal.

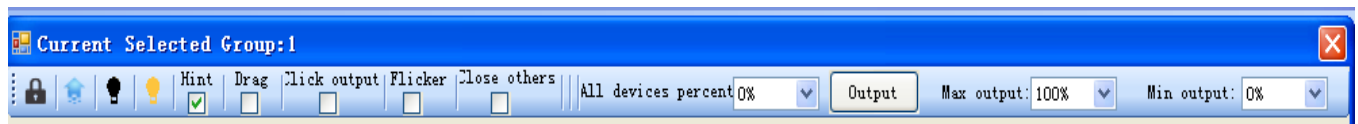



it means this address/group is empty.




it means this group has device.

Function of this interface:




 **lock the form:** if you click this button, you can't edit the interface.

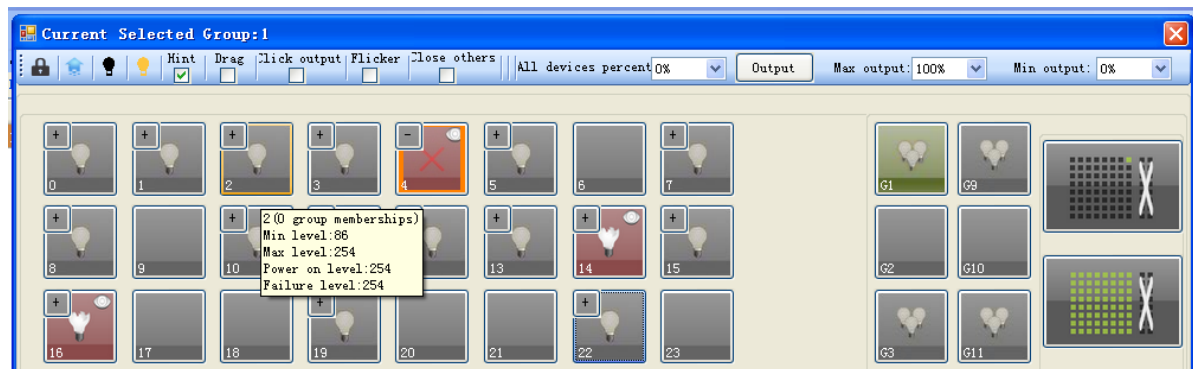
Click again (, **unlock the form**), you can edit the interface.

 **Writer information to DALI device :** after edit, you can click this button for writing information to DALI device.

 **Selected group off:** click this button, current group's devices will be off.

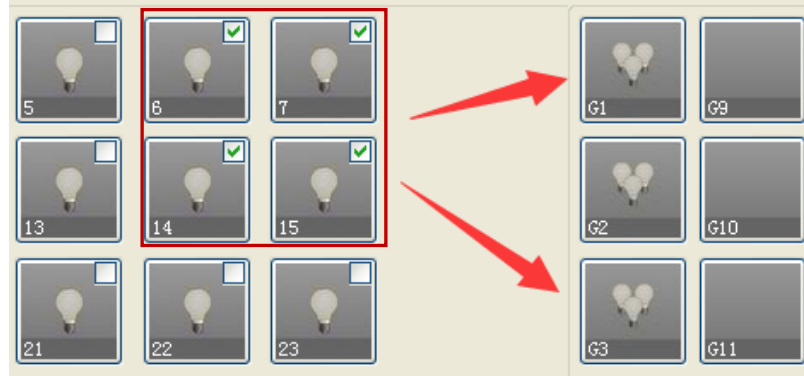
 **Selected group on:** click this button, current group's devices will be on.

 **Hint enable:** if enable it, you can look each device remark when take the mouse on the device or group. For example:

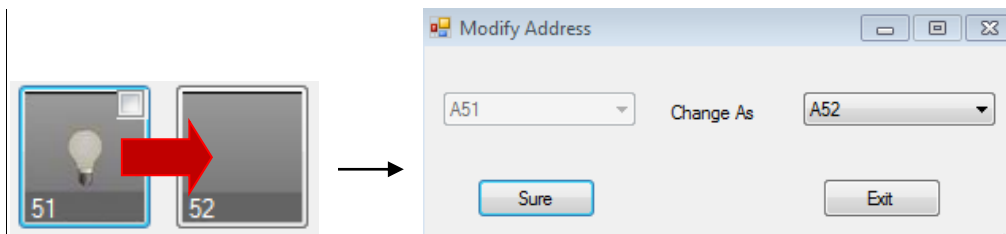


 **Drag enable**

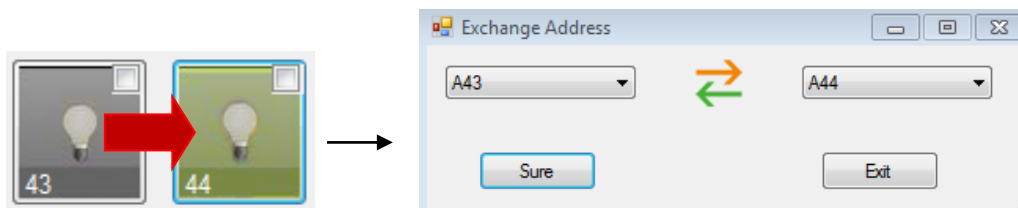
(1).if enable this function,you can add address to group through drag.



(2).drag to empty address will show modify address form.



(3).drag to other device will show exchange form.






Click output | Flicker | Close others

Output Ways

(1).Click output

Select this way, you can click the device for control it on/off.

For example: When a address/group is off state ,click it output a value(max output percent) and picture turn to on state . Click it again, output a value(min output value percent) and picture turn to off state 

(2).Flicker

Select this way,selected address/group will flicker from max output percent to min output

percent. Turn on flicker enable, then click a address then it will start flicker, click it again, it

will stop flicker. Click More it will start again.....

When stop flicker or cancel flicker, will make the flicker address/group to a state that

before flicker.

(3). Close others

Select this way, will out close all device and output a value (max output percent) to Selected address/group.



Select percentage, then click "output", all devices will run the selected brightness.



Address/group turn on output value is depending on max output percent, turn off output

is Depending on min output percent. Address/group also Flicker from max output percent

to min output percent.

--- End of Document ---